

Where you belong



The Masterplan

Living in harmony with Nature.

ONE WILL CROSS THIS 26 HECTARES OF LUSH VEGETATION ON FOOT, BICYCLE OR GOLFCART. POLLUTING VEHICLES WILL BE LIMITED ON THE GROUNDS. GUARANTEED OF A HARMONIOUS AND SUSTAINABLE DEVELOPMENT, THE ESTATE WILL BENEFIT FROM THE SERVICES OF THE FUTURE SMART CITY OF CAP TAMARIN.

Arena Villas

Corniche Villas

Overlooking the river and the turquoise ocean in an eternal decor, the Corniche Villas enjoy a fascinating location.

To pay tribute to this exceptional beauty, architecture without compromise was necessary. Resolutely contemporary, their sleek sublime views enhances the lush vegetation.

Luxury of space and luxurious space !

Barachois Villas

Mangrove Villas

Hameau Villas

Hidden in a vegetal cocoon, the Hameau Villas are an ode to the sweet life under the Mauritian tropics.

The sober and elegant villas blend naturally in their environment. The beautiful terrasse in the form of the veranda extends on to a wooden deck which leads to the stone slate pool and kiosk.

It predicted the softness of the evenings «Mauritian Style».

The Village

Limited cars to avoid disturbing the joyful polyphony of the tropical birds...

The village is nestled in the heart of Akasha. As a figurehead in the eco-responsible field, calm reigns in this heaven of peace.

Feeder Villas

Mountain Villas

These private edens offer spectacular views of the surrounding mountains and in some cases the river, ocean, or below, the soothing Tamarina Championship Golf.

Spaces speak: the living room opens both to the outside and inner garden, reinforcing the feeling of being one with Nature.





The Villas

Corniche Villas

Nature invites itself to the villa with an interior garden; 5 to 6 bedrooms, all with ensuite bathrooms; a spacious designer kitchen which emanates warmth and friendliness.

A dream sight from the living room, leading to an immense covered terrace, an infinity pool and the harmoniously arranged kiosk on plot sizes varying from 1,754 m² to 2,083 m².

Overlooking the river and the turquoise ocean, the Corniche villas enjoy a fascinating location.

To pay tribute to this exceptional beauty, an uncompromising architecture was necessary.

Corniche Villa Type A



Resolutely contemporary, their sleek sublime views enhance the lush and luxurious vegetation, with spacious living spaces ranging from 558.5 m² to 667.5 m².

Corniche Villa Type B

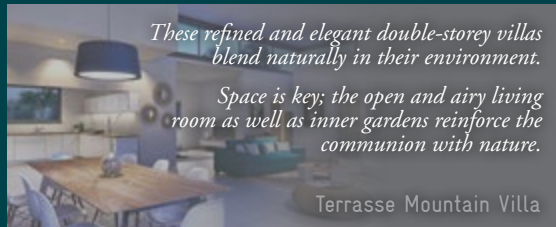


Mountain Villas

These refined and elegant double-storey villas blend naturally in their environment.

Space is key; the open and airy living room as well as inner gardens reinforce the communion with nature.

Terrasse Mountain Villa



The Village & Hameau

The Village is nestled in the heart of Akasha.

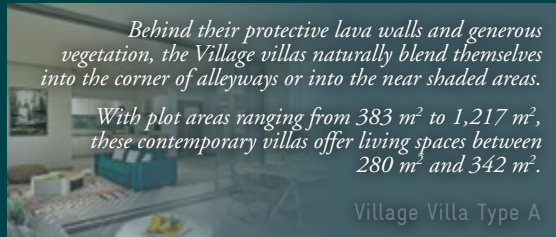
As the figurehead of the eco-friendly estate, peace prevails in this haven of nature.

Limited access to vehicles to avoid disturbing the joyous chirping of the tropical birds...

Behind their protective lava walls and generous vegetation, the Village villas naturally blend themselves into the corner of alleyways or into the near shaded areas.

With plot areas ranging from 383 m² to 1,217 m², these contemporary villas offer living spaces between 280 m² and 342 m².

Village Villa Type A



Comprising 3 and 4 bedrooms, its living spaces combine beauty with practicality.

The living room stays fully open on the large covered terrace and kiosk and invites to the charming 'inside-outside' concept of Mauritian living.

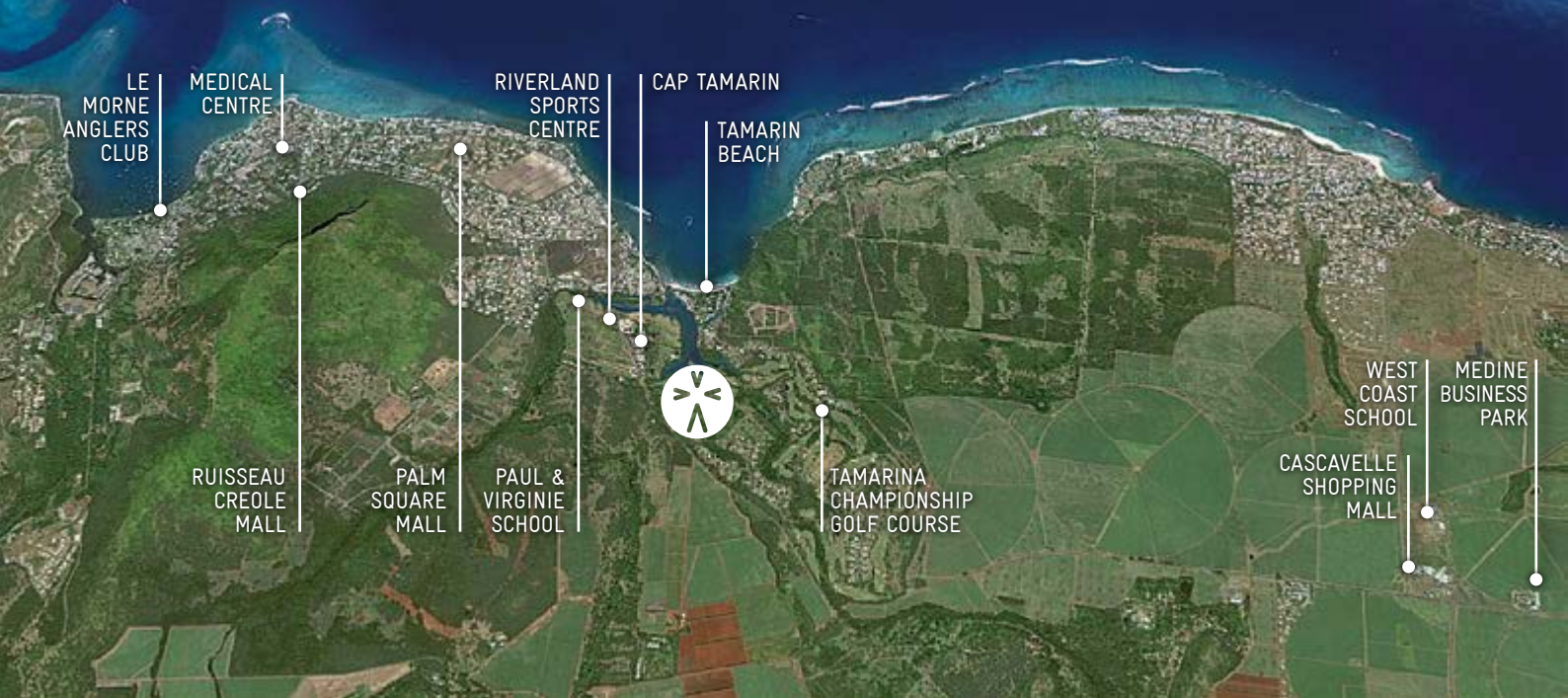
Village Villa Type B



Owners' Benefits

RESTAURANT & BAR, FITNESS CENTRE, RIVER SHUTTLE TO THE BEACH, CONTROL ACCESS, 24/7 CONCIERGE, RENTAL OF PADDLES, KAYAKS AND BIKES, RESIDENT DISCOUNT CARD, RENTAL MANAGEMENT.







Tamarin village and its surroundings

Tamarin



Tamarin is an authentic coastal Mauritian village with a prime situation on the western side of the island, within easy reach of the economic and financial hub of Mauritius.

TAMARINA CHAMPIONSHIP GOLF COURSE - RESTAURANTS - CASELA WORLD OF ADVENTURES
CASCAVELLE SHOPPING MALL - TAMARINA BEACH CLUB - ANGLERS CLUB - SURF AND PADDLE
DOLPHIN WATCHING & SWIMMING - HUNTING GROUNDS - LE MORNE WORLD HERITAGE SITE



The Team



AKASHA IS THE FRUIT OF A CLOSE COLLABORATION BETWEEN PASSIONATE PROFESSIONALS AND THEIR COMPLEMENTARY KNOW-HOW. ALL HAVE FALLEN UNDER THE SPELL OF THIS ESTATE AND HAVE DECIDED TO UNITE TO BUILD A LANDMARK RETREAT IN MAURITIUS.